

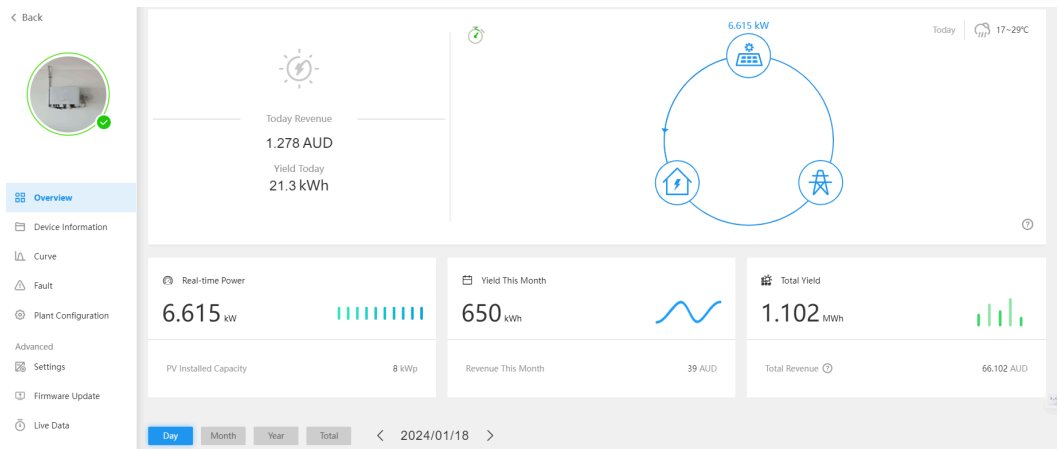
## Sungrow Solar Monitoring Platform guide (No smart meter)

- Installer connects inverter to home WiFi on install day and registers account with provided email/password - this would have been completed by our installers and Admin team.
- If email with login info not received, click "forgot password" to set up new credentials - contact SunPeople to assist you with access to the account if you cannot see the site once set up account

### Home Screen Overview

Description: The home screen displays real-time performance data and system status.

- Green tick and circle means system online and producing power during day
- Arrows and figures update to show current power flow
- If not online, inverter lost WiFi connection and needs to be reconnected



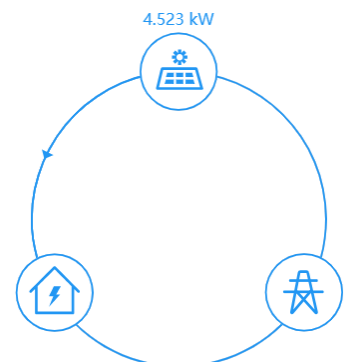
### System Status Indicators

- Green online status indicator shows system working properly
- Yellow or red indicators mean an alert or error that needs attention
- Hover over indicator for more details on any issues

A chart to the right showing recent solar production levels. 

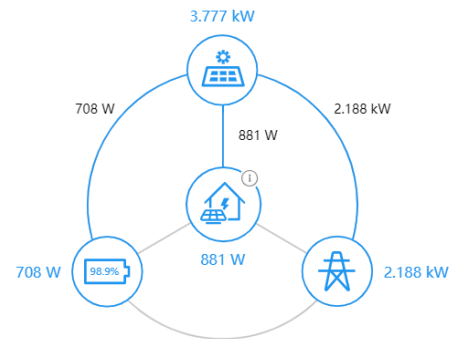
- **Example (use image as reference)**; 12:30PM on a summer's day, slightly overcast. System is producing 4.523kW.
- Circles represent production levels
- Shows typical production levels for the current location and time of day

-The table underneath the graph called 'real time power' is showing what your system is currently producing.



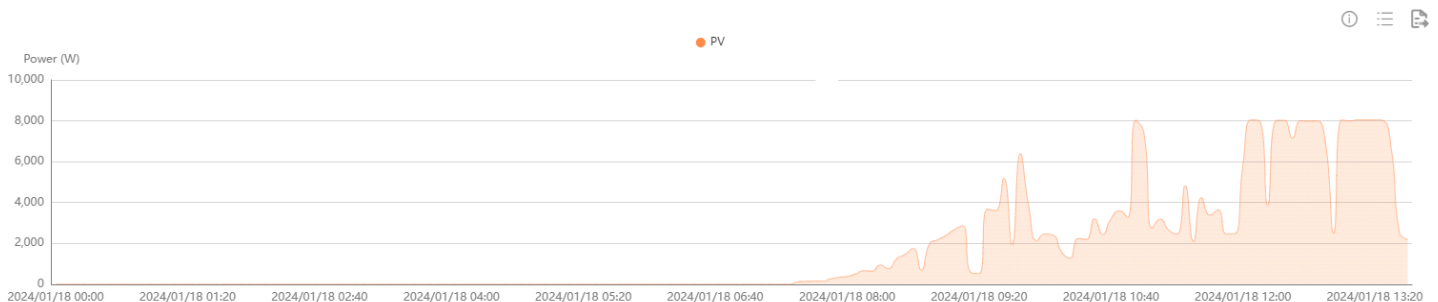
- Current month yield is showing how much your system has produced in total for the month.

This is what a system with a smart meter installed looks like on the monitoring platform. [→](#)



**Description:** A breakdown of today's solar energy generation. The image below shows what the exemplified system has produced so far today.

- If you click on the back arrow, you can see what your system did yesterday, and you will be able to go back to the first day of the installation.
- Your graph will look different each day, due to different levels of production. One day the graph line may be sitting low, this may be due to an overcast day. This is normal. On a sunny day, you'd expect the line to be higher up on the graph.





1/5 Sunset Avenue  
Barrack Heights | NSW | 2528  
(02) 4257 0974  
info@sunpeople.com.au  
www.sunpeople.com.au

- You can click on day, month year and total which will show you the production rates for that time period.

### **Title: Live Production Monitoring**

Description: An option for viewing live solar production data.

- Shows current power output level in Watts or kW
- Graph updates every 5 seconds to track minute-to-minute changes
- Useful when system is experiencing issues to diagnose problems
- Can also view if clouds are temporarily reducing output levels