

# Fronius GEN24 Inverter WiFi Reconnection Guide

Based on the Fronius YouTube Video

<https://youtu.be/R7ssVXOTDzA?si=BBLdWzKS5UB70RAz>

**Please note, before reconnecting your Inverter to WiFi, you will need the following:**

- ❖ **Your home Wi-Fi password.**
- ❖ This is the password you have set up for your home WiFi system.
  
- ❖ **Your mobile phone.**
- ❖ This is what you will use to log into SolarWeb and to reconnect your inverter to the internet.
  
- ❖ **Your customer password for your inverter.**
- ❖ In most cases, this is Solar123%
- ❖ If that doesn't work - try Solar@123 or Solar 123456%

## Reconnection Process

### ❖ Step One

- ❖ On the front of your GEN24 Inverter - there are THREE buttons, as labeled to the right.
  
- ❖ Just once, push the Optical Button. This should make the WiFi light turn blue and start to flash.



- ❖ Please note, this light will continue to flash blue for roughly half an hour, even after connecting your inverter to the WiFi. Do not be alarmed by this.

## ❖ Step Two

- ❖ Open your mobile phone and disconnect it from Mobile Data, this is just to make the process easier down the track. If you cannot figure out how to do this for your phone - it is okay to skip this step.

## ❖ Step Three

- ❖ Open the WiFi settings on your mobile phone. You should see all available local WiFi connections pop up. Among these, will be one that is called FRONIUS\_(followed by some numbers). An example of this can be seen to the right.

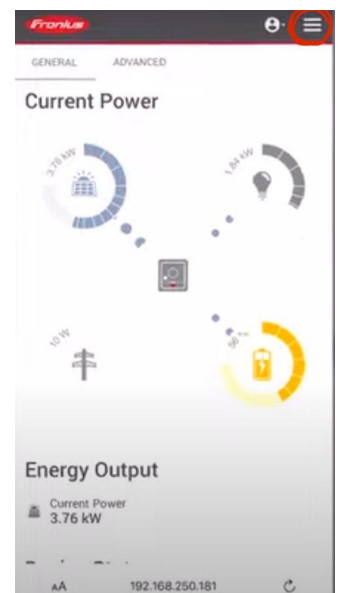


- ❖ Press on the Fronius\_ WiFi name. You will be prompted to enter a password. This password is **12345678**.

## ❖ Step Four

- ❖ Next, open a webpage on your phone. This can be Safari, Google Chrome, FireFox, anything that you use to access the internet.

- ❖ In the URL search bar, type in the following numbers and dots: **192.168.250.181** This should load a Fronius webpage that allows you to view your own system's production. An example can be seen to the right.

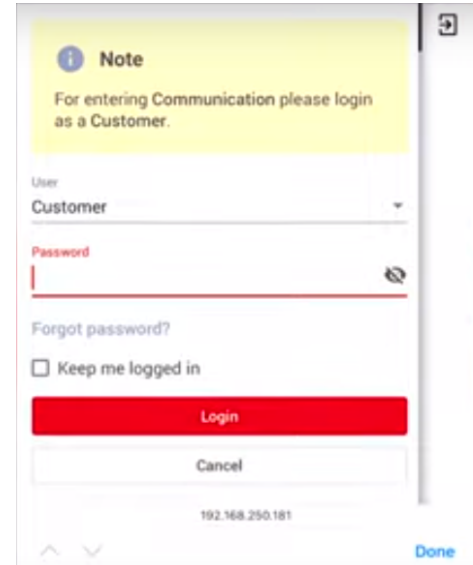


## ❖ Step Five

- ❖ Press the 3 lines located at the top right of your screen. (Circled in red in the previous picture for reference). This should open the menu.

- ❖ From here, tap “Communications”

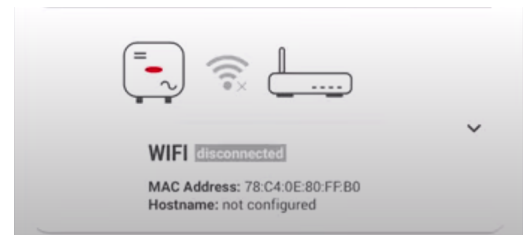
- ❖ This will pop up with a screen asking for your User and Password, as seen on the right. Your User should say Customer, and your password will be either the Solar123% one that was mentioned earlier, or Solar@123



## ❖ Step Six

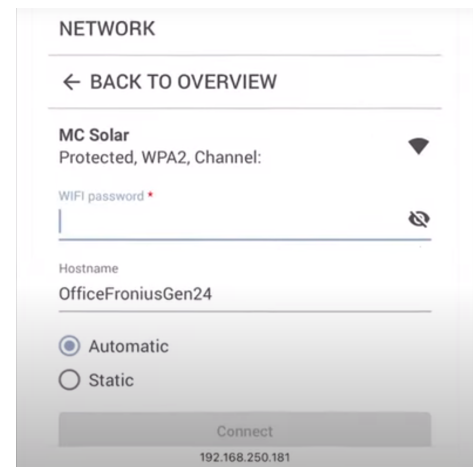
- ❖ Once you have logged in, tap the three lines yet again. This will open the menu again.

- ❖ This time, tap “Network”. This will open a page with all possible wifi connection types. Scroll down until you see Wi-Fi, and tap on it. Picture to the right for reference.



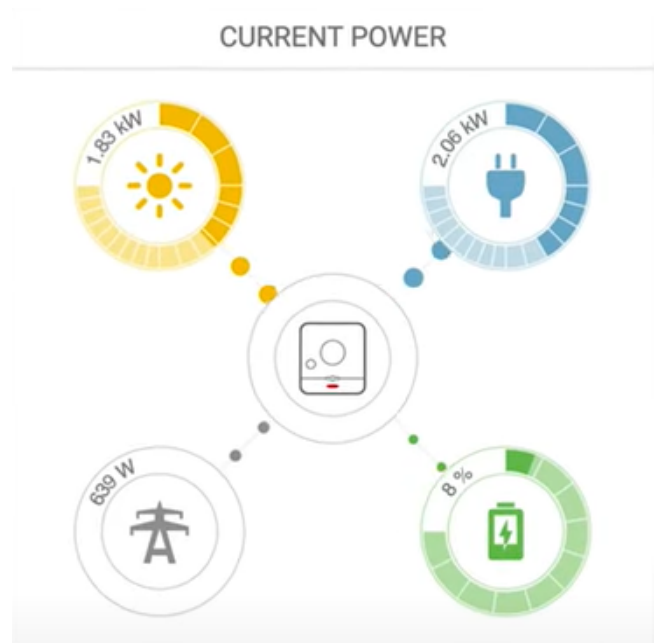
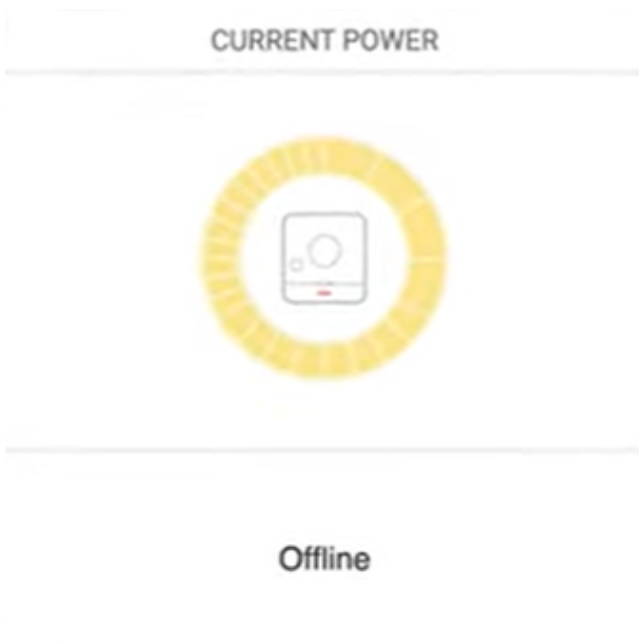
- ❖ Once you have tapped on this - it will show all available Wi-fi networks in your area. Locate your home Wi-Fi network, and tap on it. This will then give you the option to enter your own Wi-Fi password - as seen on the right.

- ❖ Once you have put your password in - press “Connect”.



## ❖ Step Seven

- ❖ You can now exit this webpage and reconnect your mobile phone to mobile data (if you did this step).
- ❖ Then, navigate to your Fronius SolarWeb Monitoring.
- ❖ If you see the image below on the left - continue to refresh your page until you see the image on the right. This means that your monitoring is back online - and your system is connected to the Wi-Fi again.



Your Fronius Gen24 Inverter is now reconnected to Wi-Fi.